

# Pinnacle™ LITE

Pelvic Floor Repair Kit, Posterior

Featuring Next Generation LITE Mesh

Today's physician is looking for a mesh material to address the concerns associated with the consequences of the inflammatory response. The LITE PFR Kits with next generation LITE Mesh were designed to enhance tissue integration and more specifically to reduce the mesh surface area, ultimately decreasing the contact area with the patient's tissue.

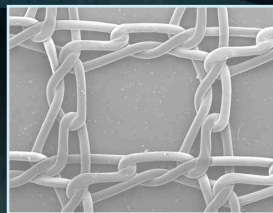
*Mesh in the posterior compartment provides a treatment option for high rectoceles and enteroceles, and reinforcement of the upper two-thirds of the vagina ...*  
**now featuring LITE Mesh.**

103 cm<sup>2</sup> = total surface area

28 % reduction in total surface area as compared to the first generation Pinnacle Posterior Device



**Pinnacle LITE Mesh**  
Mesh Weight: 25g/m<sup>2</sup>  
Surface Area Ratio: 1.11



**Pinnacle (standard) Mesh**  
Mesh Weight: 40g/m<sup>2</sup>  
Surface Area Ratio: 1.63

LITE Mesh is composed of the same fiber diameter and material as the first generation Pinnacle PFR Kits. Enhanced through its knit design:

- **75%** increase in pore size
- **38%** reduction in mesh weight
- **32%** reduction in surface area ratio
- **Blue** for enhanced visibility

LITE Mesh is more than just a light-weight mesh. It is a balance of: **Low Surface Area, Enhanced Handling Characteristics** and features **Blue Material**.

# Pinnacle™ LITE

Pelvic Floor Repair Kit, Posterior

Featuring Next Generation LITE Mesh

## Pinnacle LITE Device in Anatomical Position

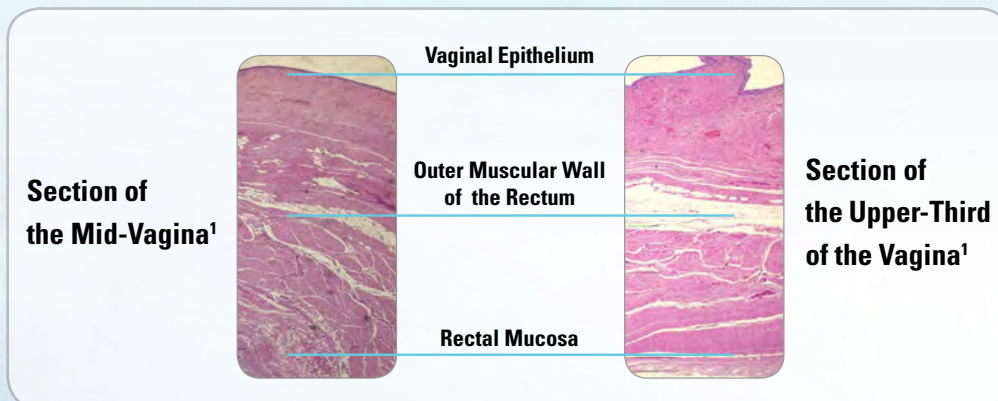
The Pinnacle LITE PFR Kit, Posterior builds on the first generation device history. This next generation light-weight mesh kit continues to offer an intra-vaginal, trocar-free prolapse repair achieving Level I support using the Capio™ Device. Not only does it enable mesh adjustability, but the Capio Device is also designed to facilitate accurate, consistent and controlled placement with a small incision.



Pinnacle™ LITE **Posterior** Device in Final Placement

## Clinical Data Supporting High Rectoceles & Enteroceles Repair

Several distinguished Urogynecologists suggest that there is limited, if any, rectovaginal fascia in the upper 2/3 of the posterior compartment.



<sup>1</sup>Kleeman SD, Westermann C, Karram MM. Rectoceles and the anatomy of the posterior vaginal wall: revisited. *American Journal of Obstetrics & Gynecology*. 193(6):2050-5, 2005 Dec.

Product Code	Product Name
M006 <b>8318150</b>	Pinnacle LITE Posterior Pelvic Floor Repair Kit Includes: (1) Capio™ SLIM Device and (1) Mesh Assembly

**Boston Scientific**  
Advancing science for life™

Pelvic Floor Institute, Capio and Pinnacle are registered or unregistered trademarks of Boston Scientific Corporation or its affiliates. All other trademarks are property of their respective owners.

CAUTION: The law restricts these devices to sale by or on the order of a physician. Indications, contraindications, warnings and instructions for use can be found in the product labelling supplied with each device. Information for the use only in countries with applicable health authority product registrations.

Data on file. Bench test results may not necessarily be indicative of clinical performance. Results from case studies are not predictive of results in other cases. Results in other cases may vary.

URO-355505-AA NOV 2015 Printed in Germany by medicalvision.

[www.bostonscientific.eu](http://www.bostonscientific.eu)  
[www.pelvic-floor-institute.com](http://www.pelvic-floor-institute.com)

© 2015 Boston Scientific Corporation or its affiliates. All rights reserved.  
DINURO2135EB